



# WELCOME

## METRO Rapid University Corridor Project

**Virtual Open House**  
Winter 2021-2022



# **METRONext**

## Moving Forward Plan





# METRONext Moving Forward Plan



**75 miles**

of METRORapid  
service



**110 miles**

of new or improved  
HOV/HOT Lanes



**16 miles**

of METRORail  
extensions

**Additional system  
enhancements**



**290 miles**

of BOOST and Signature  
Network service

NEARLY  
**70%**  
APPROVAL  
IN 2019  
REFERENDUM



# What is METRORapid?

- A bus rapid transit (BRT) system that provides fast and reliable high capacity service — similar to METRORail — with dedicated stations and lanes.
- METRORapid stations and platforms have the same look and amenities as METRORail.
- The METRORapid Silver Line in Uptown demonstrates the type of service that METRO will provide with this project.







# METRORapid Silver Line At Your Service, In Uptown



Connecting  
**Northwest Transit Center**  
to **Westpark/Lower**  
**Uptown Transit Center**



Dedicated, **transit-only**  
**lane** to move through  
traffic



Modern design offering  
**100% accessibility:**

- Wider doorways
- Level boarding



**Bus-friendly**  
traffic signals



# **METRO**Rapid

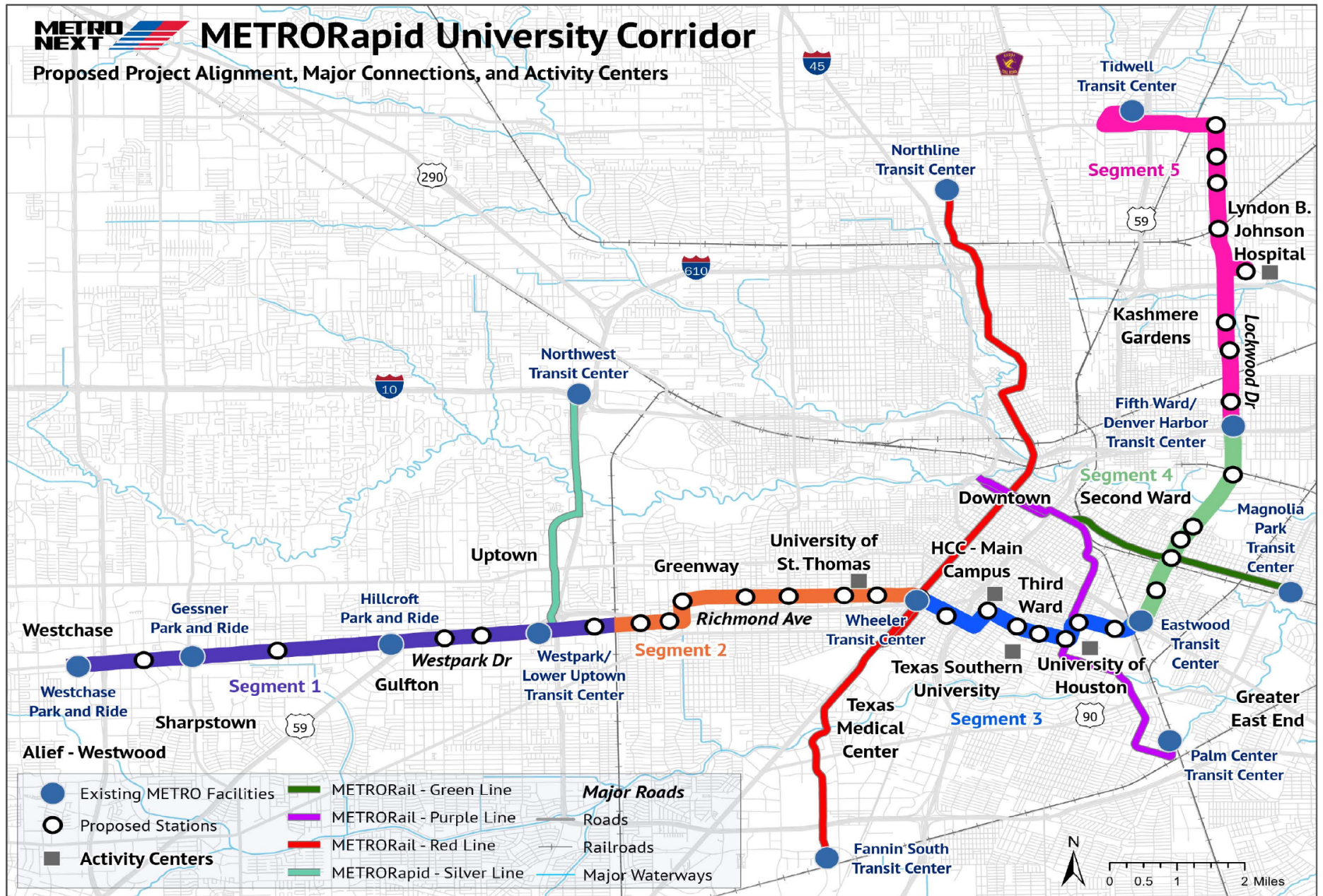
## University Corridor Project





# METRORapid University Corridor

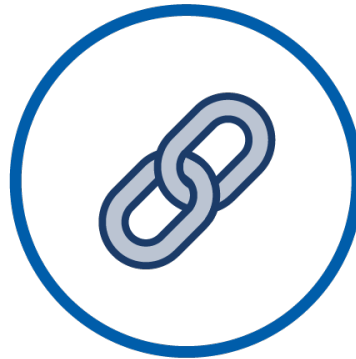
Proposed Project Alignment, Major Connections, and Activity Centers



# What is the METRORapid University Corridor Project?

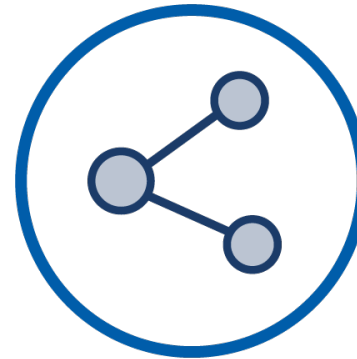
## More than a 25-mile line

connecting southwest to northeast Houston



## Connects

to METRO transit centers, Park & Rides and light rail



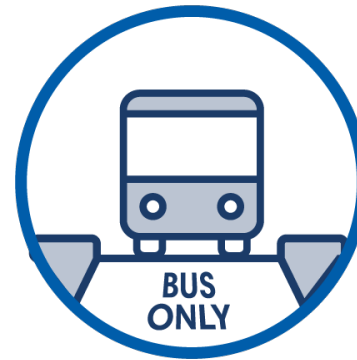
## Top-of-the-line stations

with rail-like platforms



## Dedicated bus lanes

will run mainly on city streets





# Project Benefits



# Why METRORapid University Corridor Project?



**Better  
Access**

**Stronger  
Communities**

# Better Access

- **Move more people and take more cars off the road**
- **Investment** in communities across the region with **top-of-the-line service**
- **Improve access to jobs** and economic opportunity
- **More connectivity** to other METRO services

## **Connections to:**

- METRORail Red, Green and Purple Lines
- METRORapid Silver Line
- 5 transit centers
- 3 Park & Rides
- Multiple frequent local bus routes



# Stronger Communities

- Serve projected **dense population growth** along the route
- Advance **transportation equity** with additional choices for the area
- Support a **sustainable, healthy** future for the region

## Communities

- Gulfton
- Uptown
- Greenway / Upper Kirby
- Montrose
- Midtown
- Greater Third Ward
- Greater Eastwood
- Second Ward
- Greater Fifth Ward
- Kashmere Gardens
- Eastex / Jensen

## Universities / Colleges

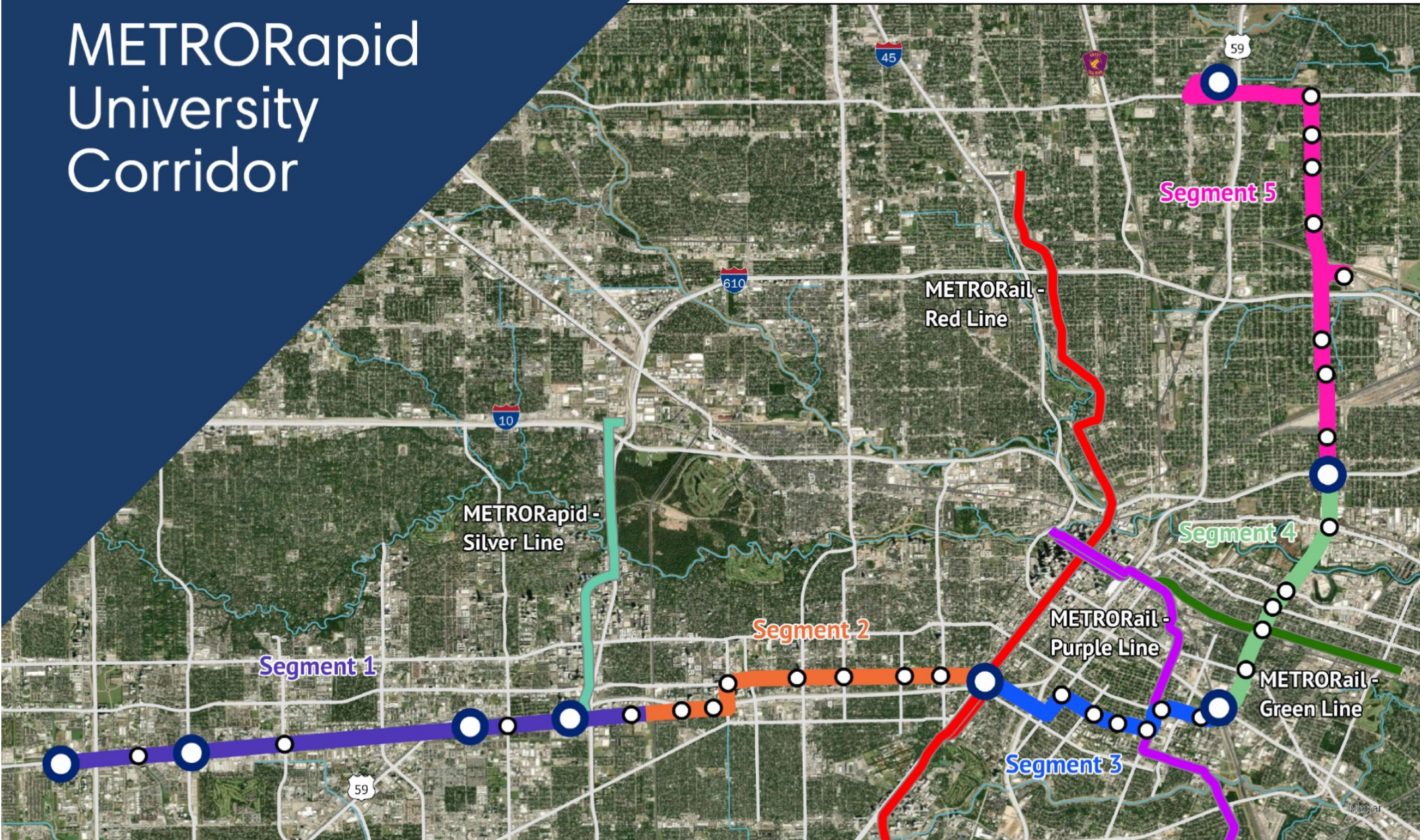
- Houston Community College System
- University of St. Thomas
- Texas Southern University
- University of Houston

# Project Highlights





# METRORapid University Corridor





# Segment 1

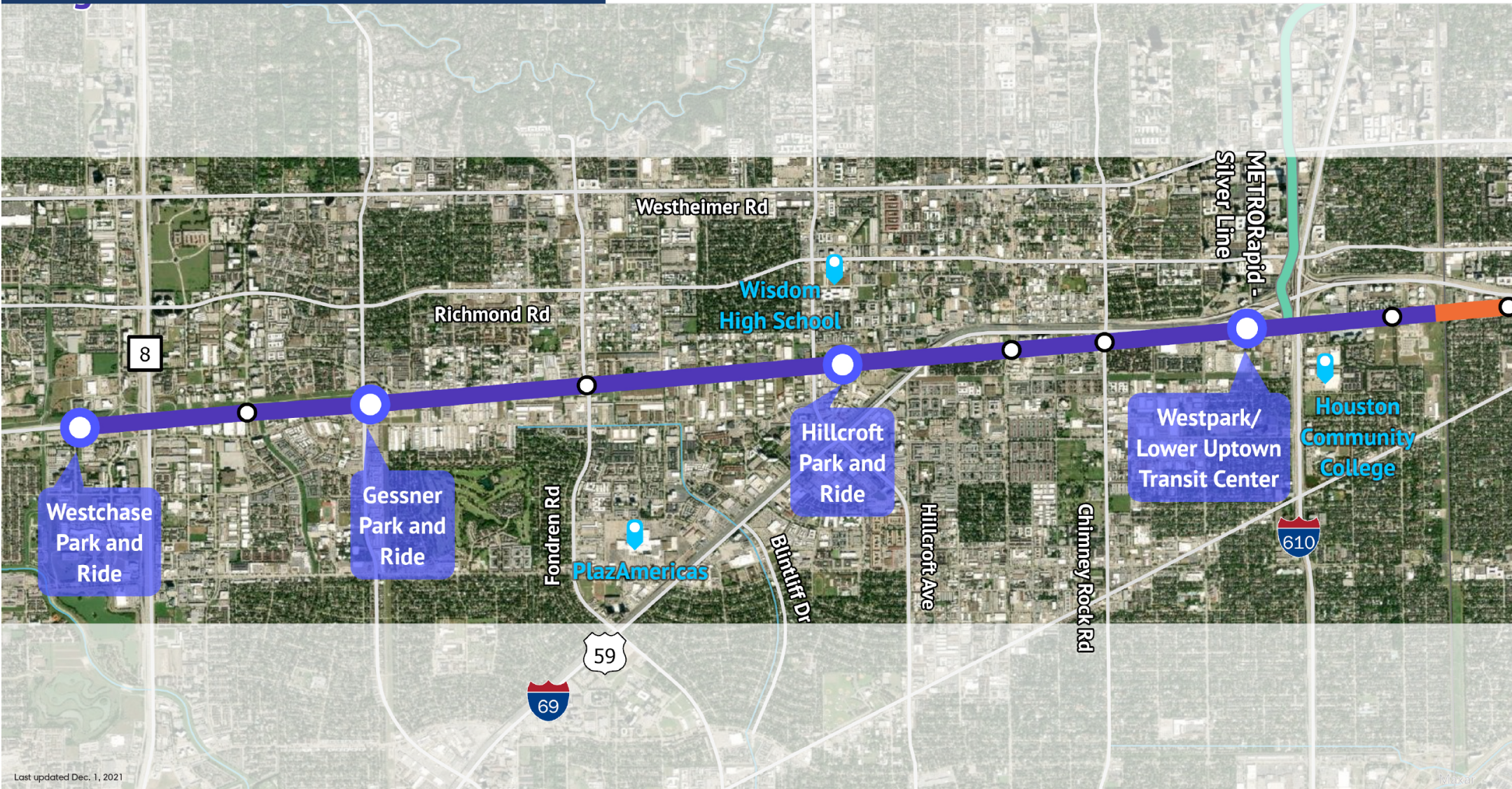


## Serves destinations and communities:

- Westchase District
- Gulfton
- Sharpstown
- Uptown



## Uses dedicated, METRO-owned right-of-way





# Segment 2

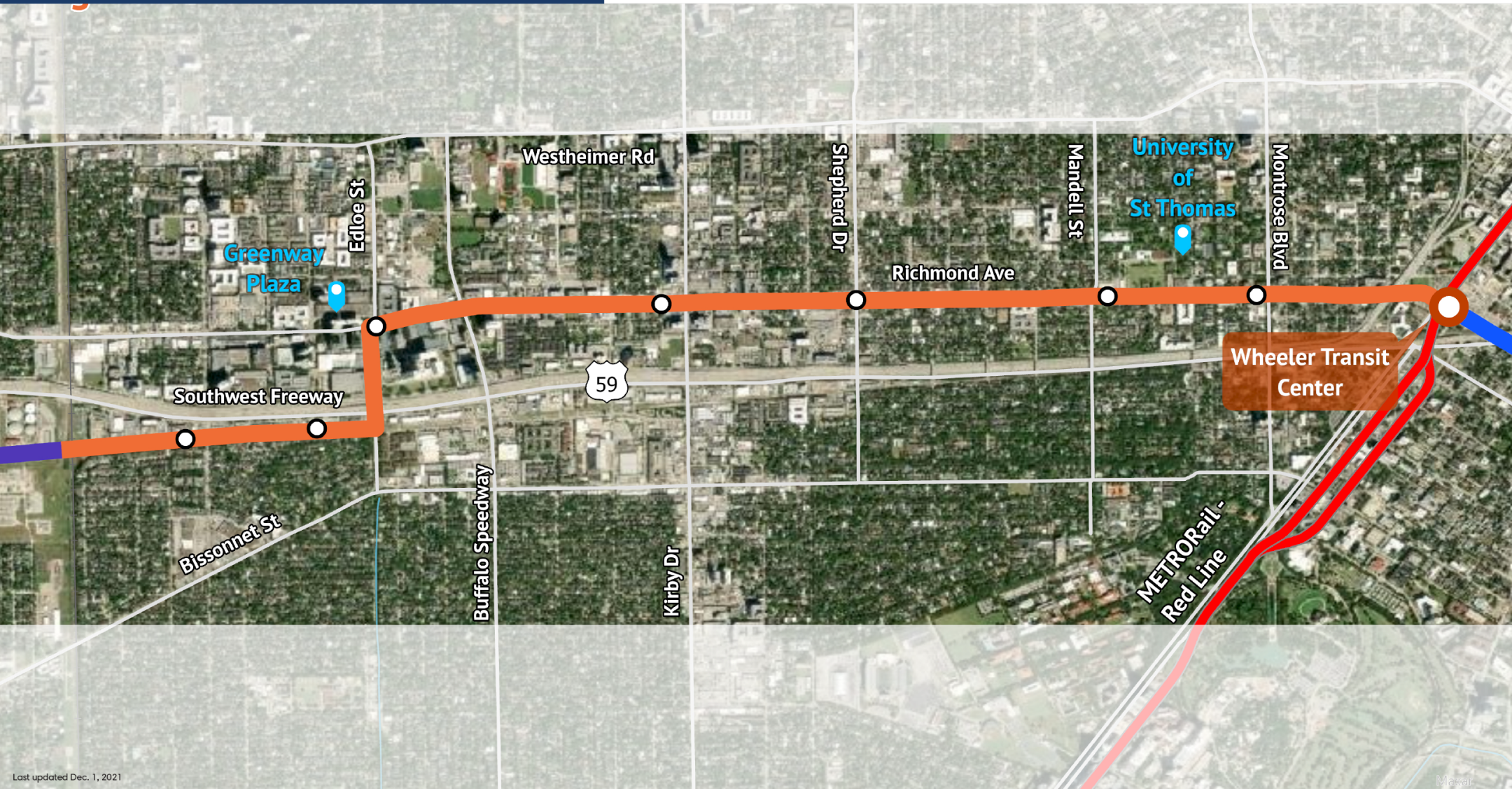


**Serves destinations and communities:**

- Greenway Plaza
- Upper Kirby
- Montrose
- University of St. Thomas



**Operates within METRO-owned right-of-way and city streets**





# Segment 3

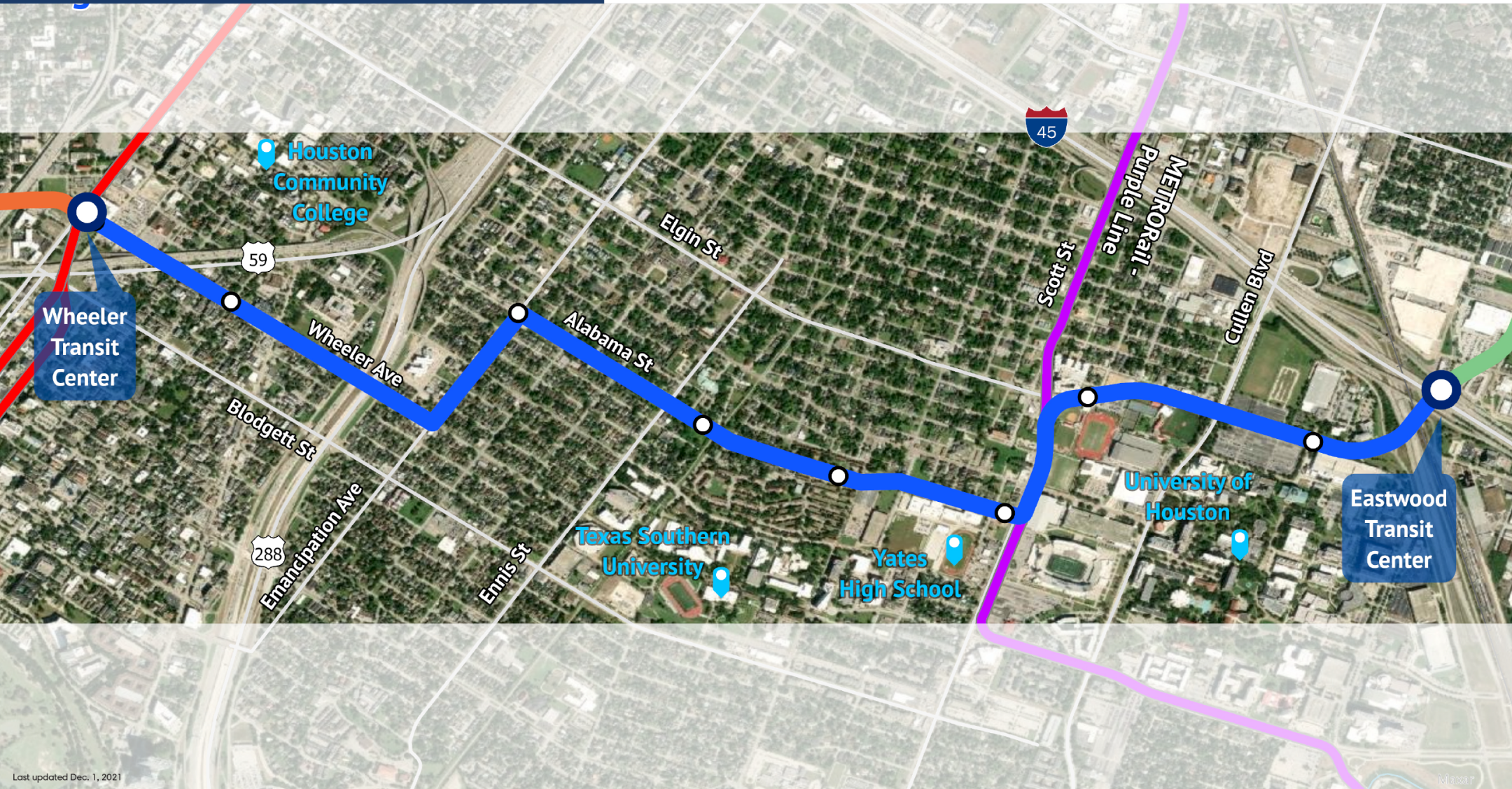


**Serves destinations and communities:**

- University of Houston
- Texas Southern University
- Midtown
- Third Ward



**Operates within city streets**





# Segment 4

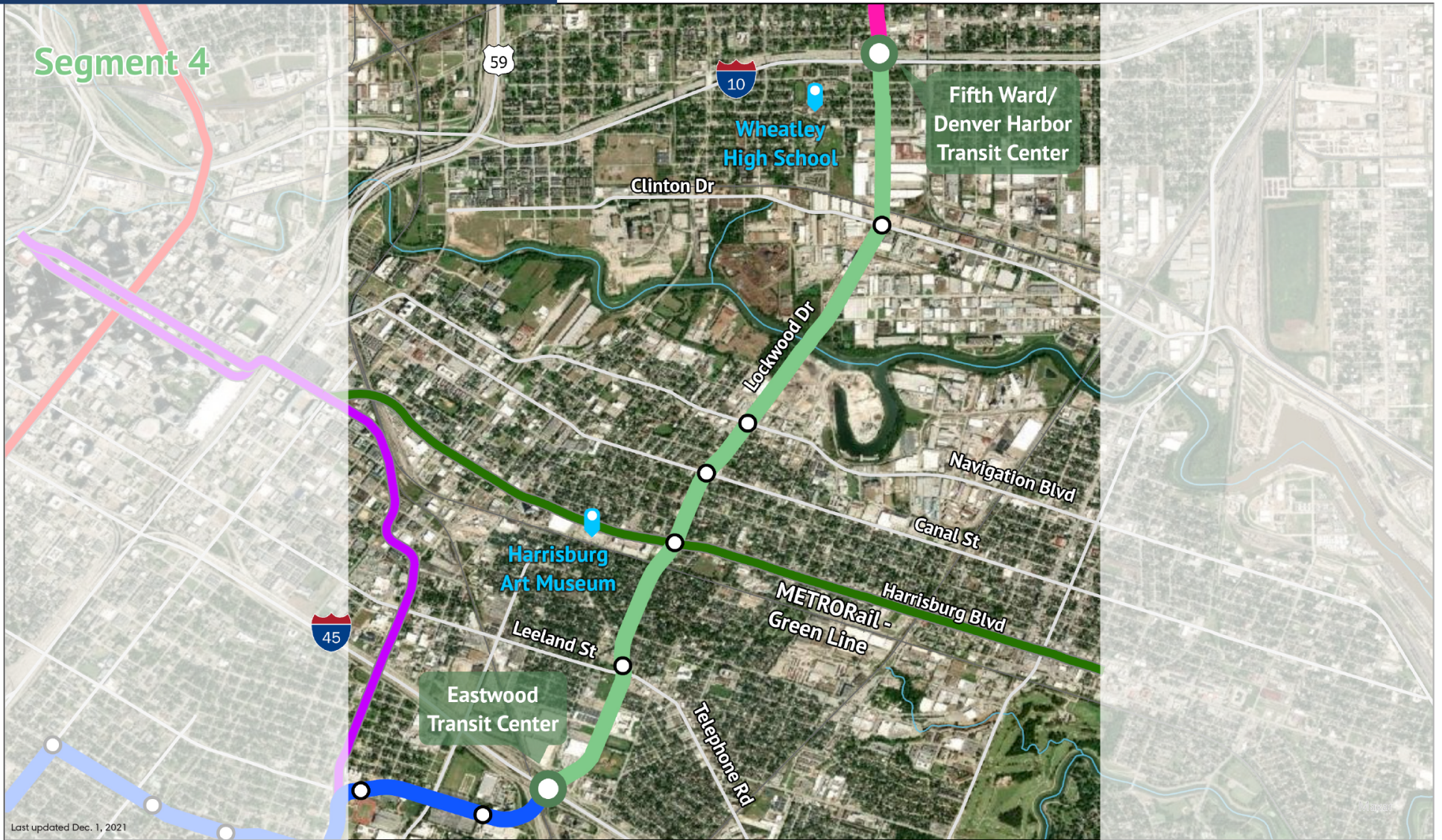


**Serves destinations and communities:**

- Second Ward
- Greater Eastwood
- Greater Fifth Ward



**Operates within city streets**





# Segment 5

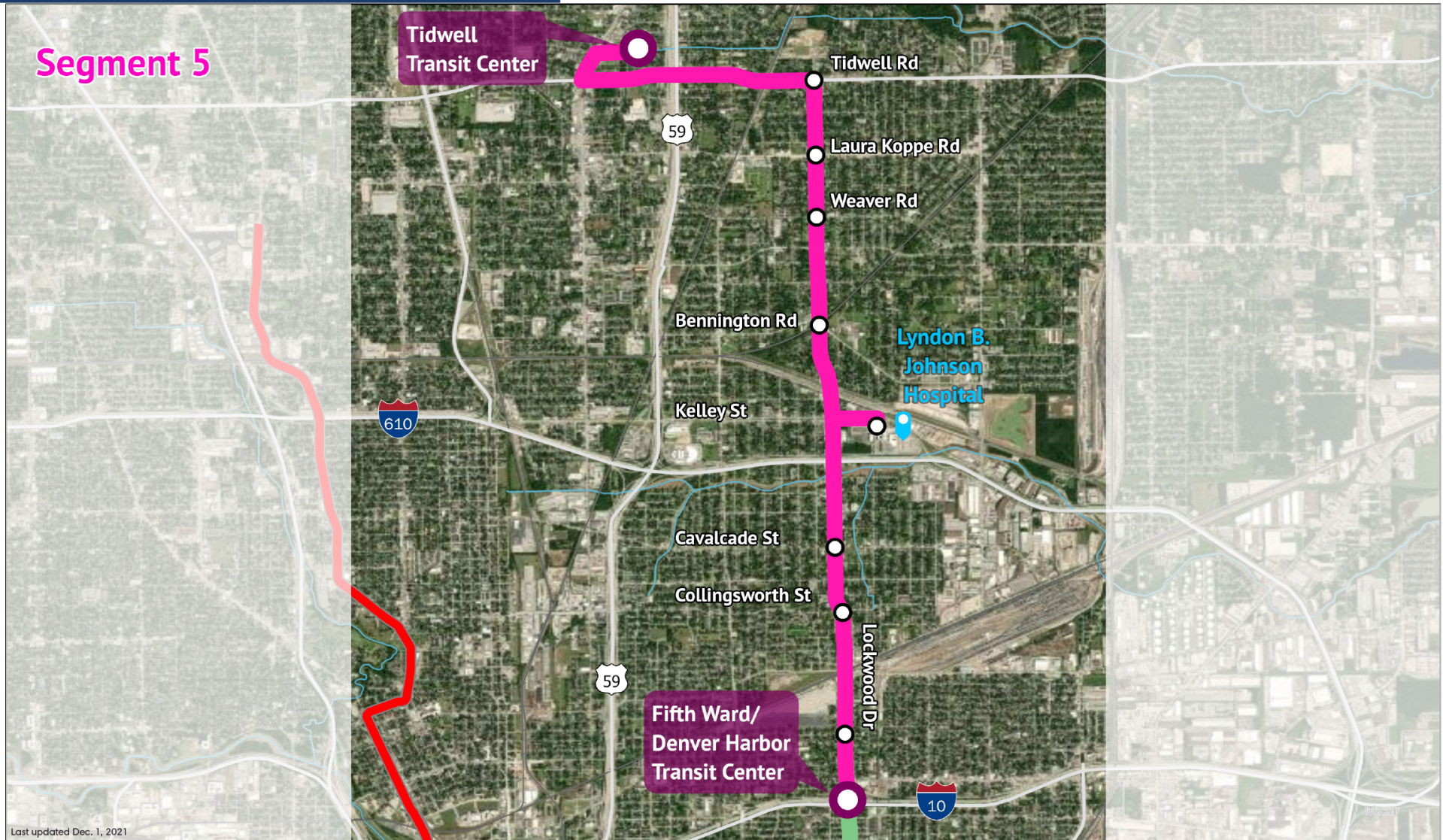


**Serves destinations and communities:**

- Greater Fifth Ward
- Kashmere Gardens
- Trinity Gardens
- Eastex Jensen
- Lyndon B. Johnson Hospital



**Operates within city streets**

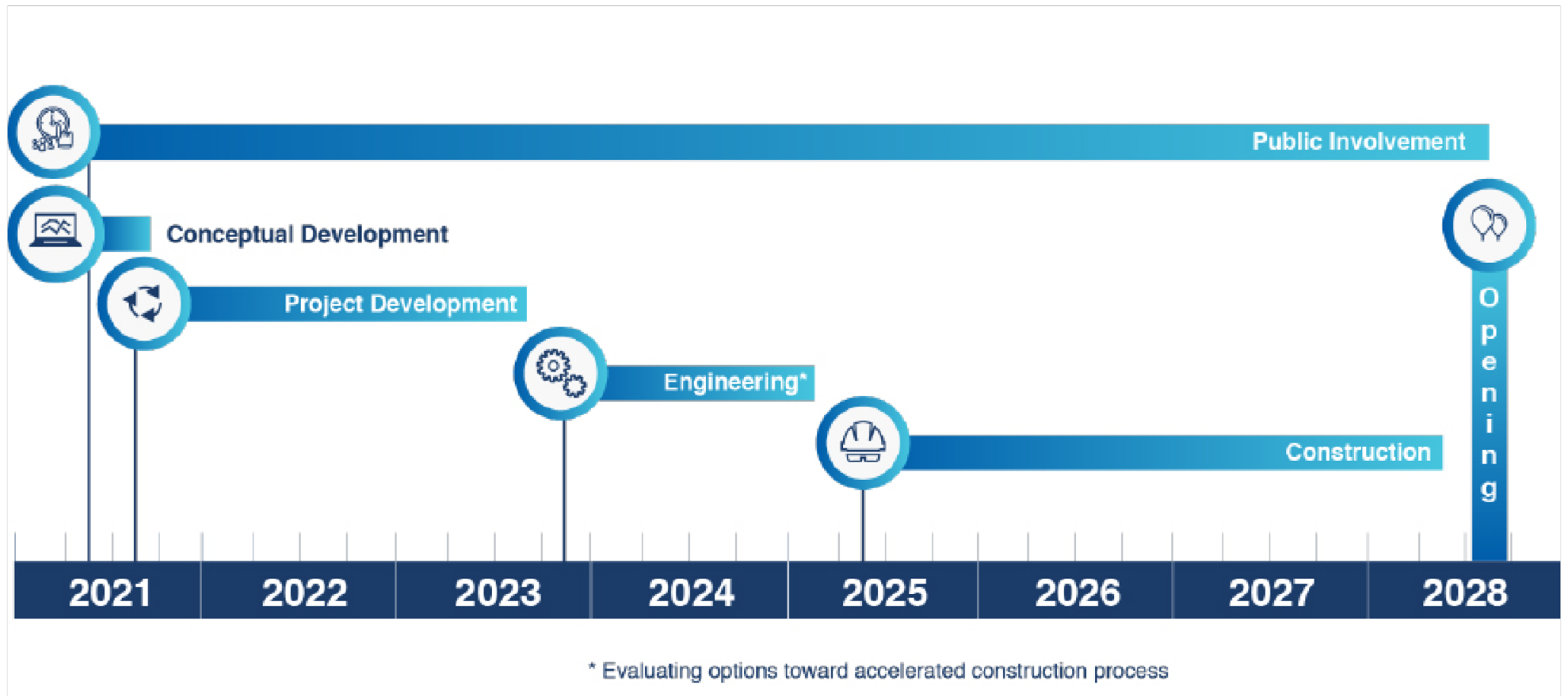


# Project Status





# Project Timeline



# Stay Connected

**RideMETRO.org/University**  
**713-635-4000**



@RideMETRO



@METROHouston



METRO Houston



@metrohouston

# THANK YOU!