



MOVING FORWARD PLAN

METRORapid Inner Katy Project
Station Workshop



August 3, 2021

Workshop Schedule

Welcome

- Staff Introduction

- Meeting Purpose and Objectives

Project Recap and Overview

- Alignment Development

- Station Performance Metrics

- Potential Stations

Breakout Rooms

- Station Topics

- Discussion

Reconvene in Main Room

- Comments and Questions

- Meeting Conclusion

Meeting Purpose and Objectives



Give an update on project progress



Introduce performance metrics for potential stations



Introduce potential stations



Get your input on how potential stations meet performance metrics

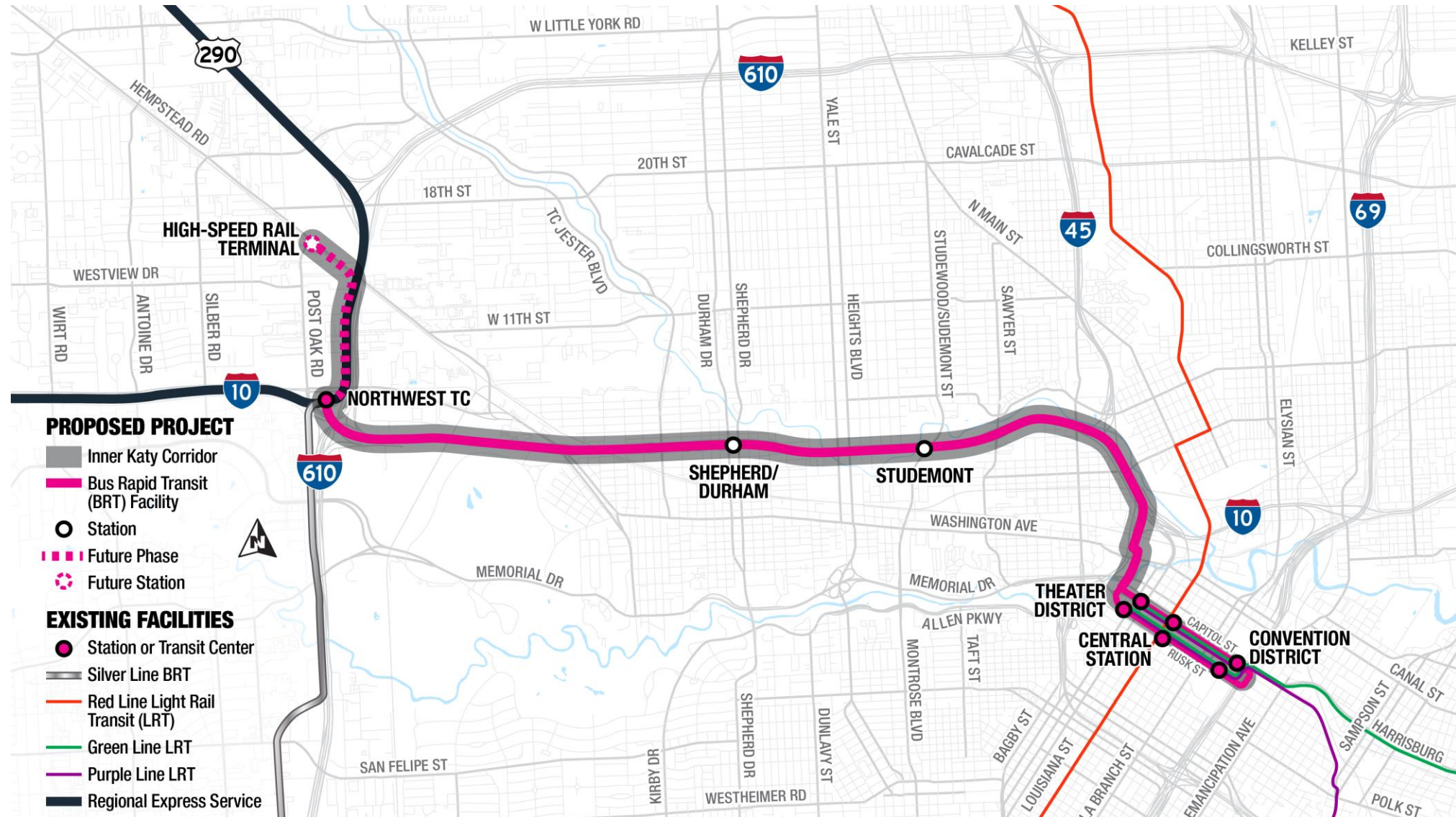


Break into smaller groups to discuss



PROJECT RECAP

METRORapid Inner Katy Project Corridor

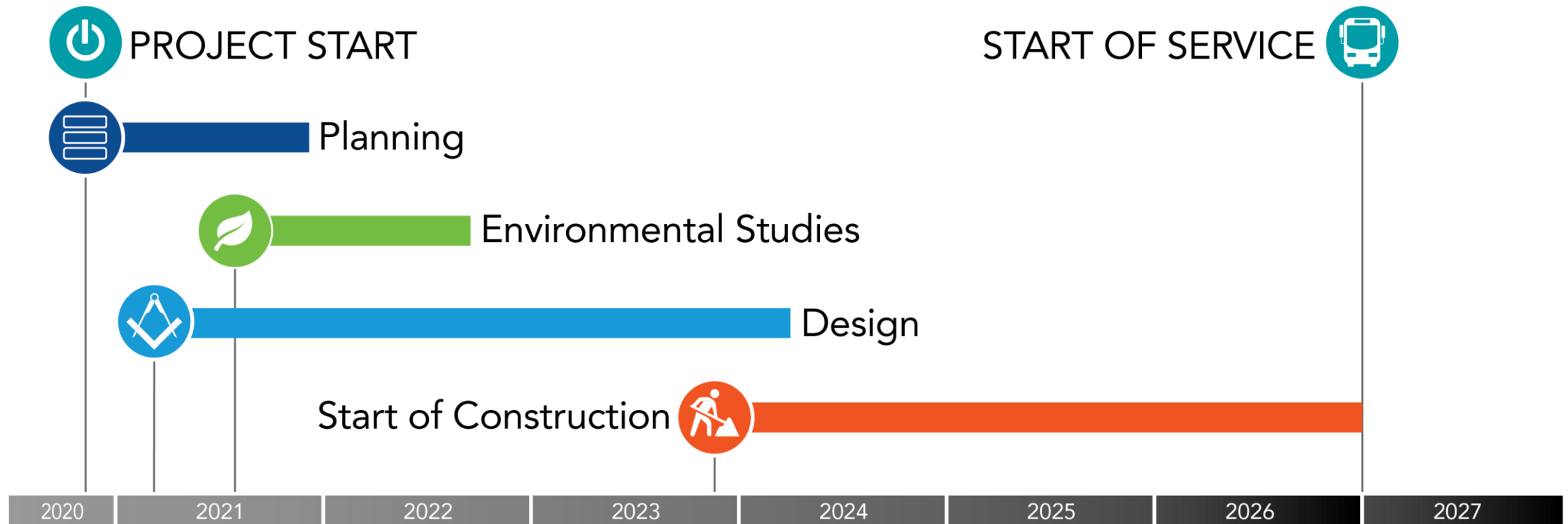


Project Description

- Rapid transit service running for 7.6 miles on I-10 West in the Inner Katy Corridor
- Two-way, exclusive guideway for rapid transit and Regional Express buses
- Reliable and accessible service, faster trips, and increased connectivity

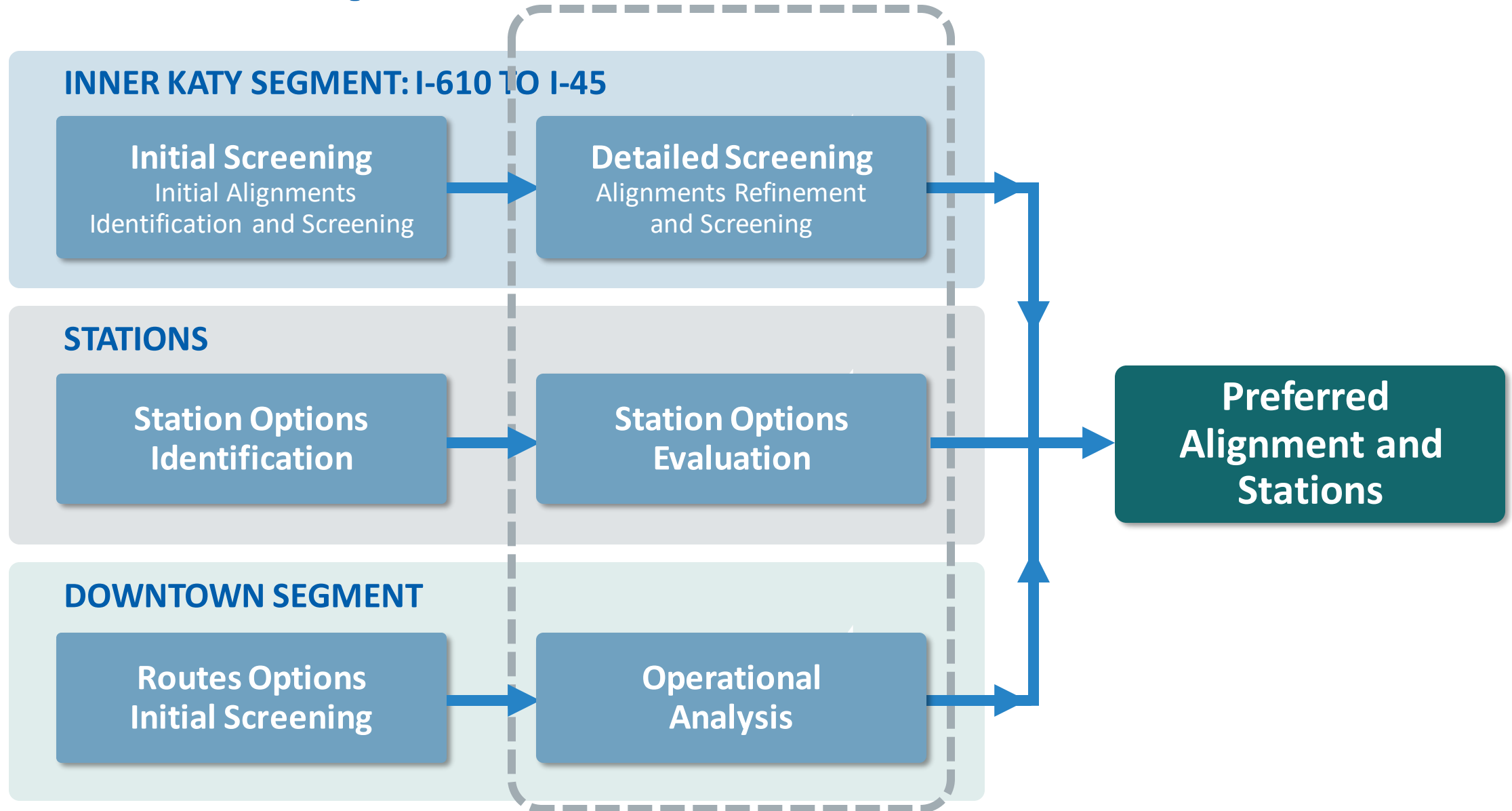


Schedule and Key Activities



ALIGNMENT DEVELOPMENT: NWTC TO DOWNTOWN AT I-45

Development Process



Option 1: Elevated Busway on the South Side of I-10; Transition to Existing CBD HOV Lanes/Ramp to Downtown



Option 2: Elevated Busway on the South Side of I-10 to Downtown – New Structure



Option 3: TxDOT's Proposed Option (Elevated Busway on the South Side of I-10 to Downtown; Partial Joint Structure with TxDOT Managed Lanes)

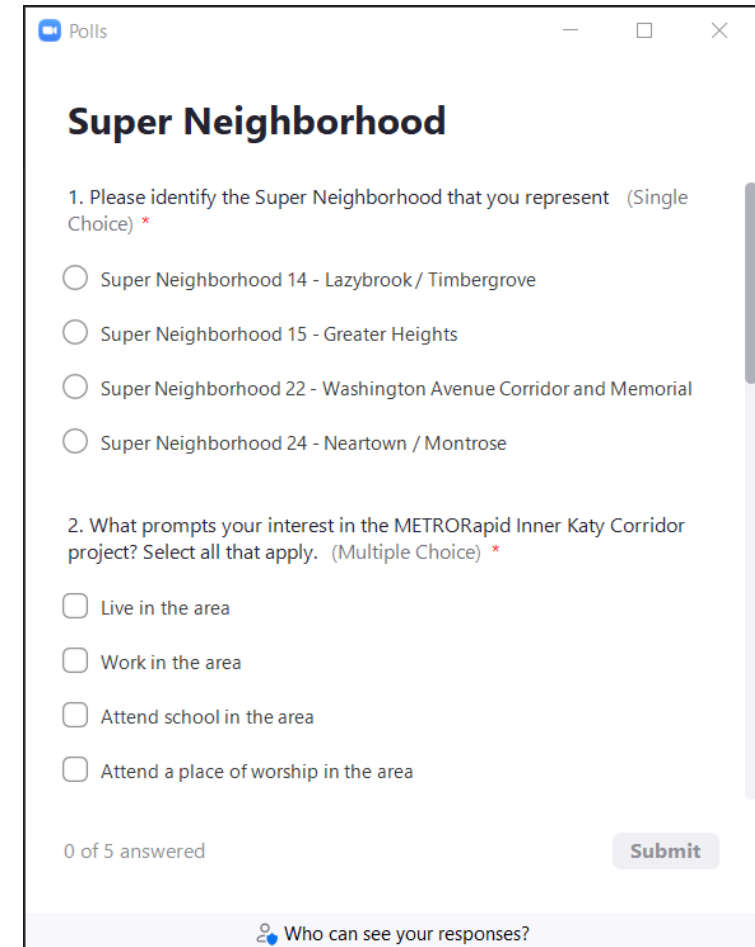




POTENTIAL STATION LOCATION OPTIONS

We Want to Hear From You

- Locate the “Poll Pop-up” on the right-hand side of your screen
- Select your answer.
- Be sure to scroll down to view all questions.



Polls

Super Neighborhood


1. Please identify the Super Neighborhood that you represent (Single Choice) *

- ☐ Super Neighborhood 14 - Lazybrook / Timbergrove
- ☐ Super Neighborhood 15 - Greater Heights
- ☐ Super Neighborhood 22 - Washington Avenue Corridor and Memorial
- ☐ Super Neighborhood 24 - Neartown / Montrose

2. What prompts your interest in the METRO Rapid Inner Katy Corridor project? Select all that apply. (Multiple Choice) *

- ☐ Live in the area
- ☐ Work in the area
- ☐ Attend school in the area
- ☐ Attend a place of worship in the area

0 of 5 answered Submit

 Who can see your responses?

Performance Metrics

- Access to Nature and Environmental Features
- Pedestrian and Bike Connections
- Ease of Access to Stations

Performance Metrics - Poll

- Locate the “Poll Pop-up” on the right-hand side of your screen.
- Select your answer.
- Be sure to scroll down to view all questions
 - Which of these topics are most important to you when considering transit options?

Importance of topics

1. How important is the following topic when considering transit options?

Access to Nature and Environmental Features

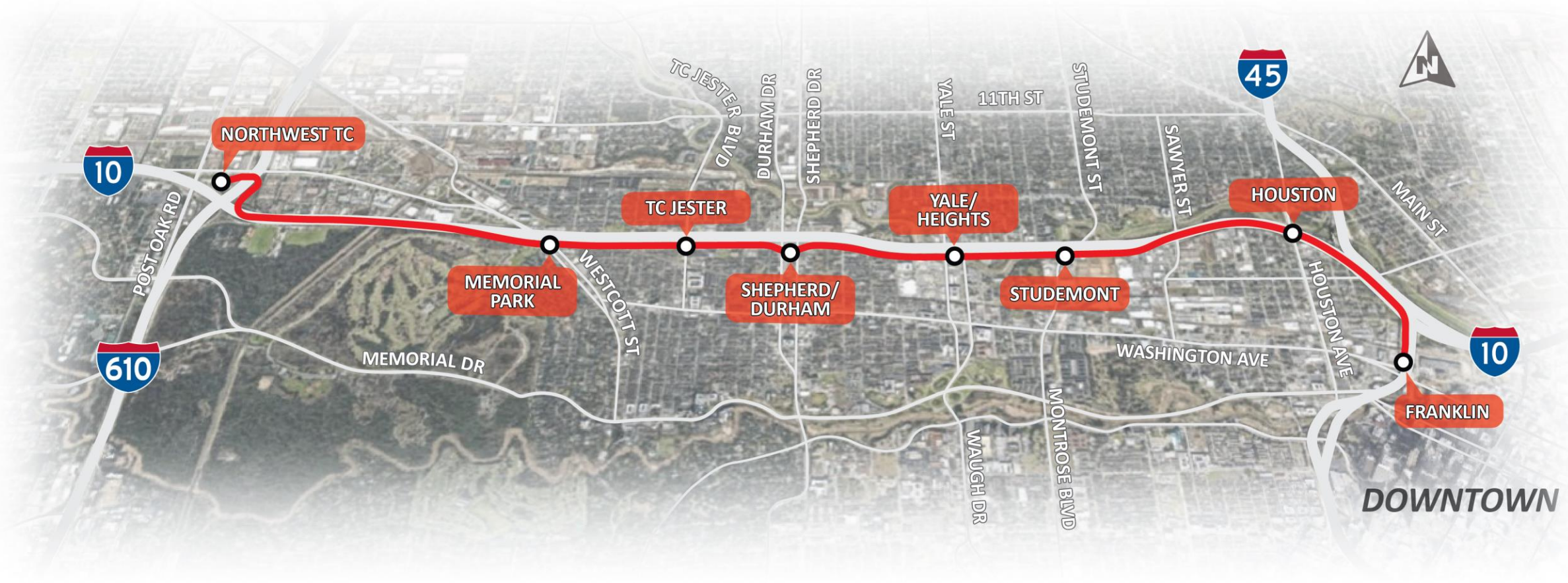
- ☐ Extremely important
- ☐ Important
- ☐ Neutral
- ☐ Low importance
- ☐ Not at all important

2. How important is the following topic when considering transit options?

Pedestrian and Bike Connections

- ☐ Extremely Important
- ☐ Important
- ☐ Neutral
- ☐ Low Importance
- ☐ Not at all important

Potential Stations



Potential Stations - Poll

- Locate the “Poll Pop-up” on the right-hand side of your screen.
- Select your answer.
- Be sure to scroll down to view all questions
 - How important is the following station?

Importance of potential station

1. How important is the following potential METRO station to you?

Memorial Park

- ☐ Extremely Important
- ☐ Important
- ☐ Neutral
- ☐ Low Importance
- ☐ Not at all important

2. How important is the following potential METRO station to you?

TC Jester

- ☐ Extremely Important
- ☐ Important
- ☐ Neutral
- ☐ Low Importance
- ☐ Not at all important

Northwest Transit Center



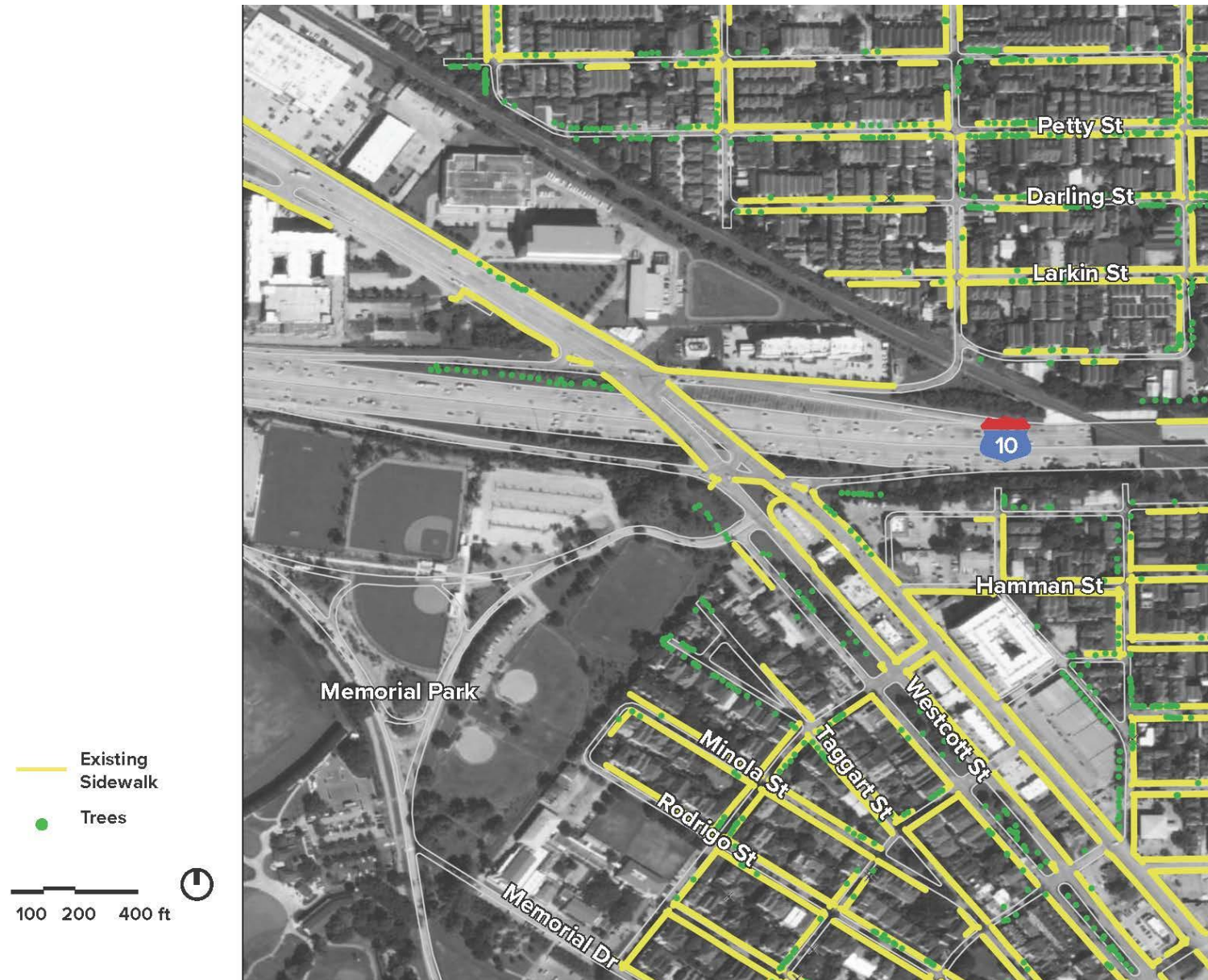
Potential Station at Memorial Park



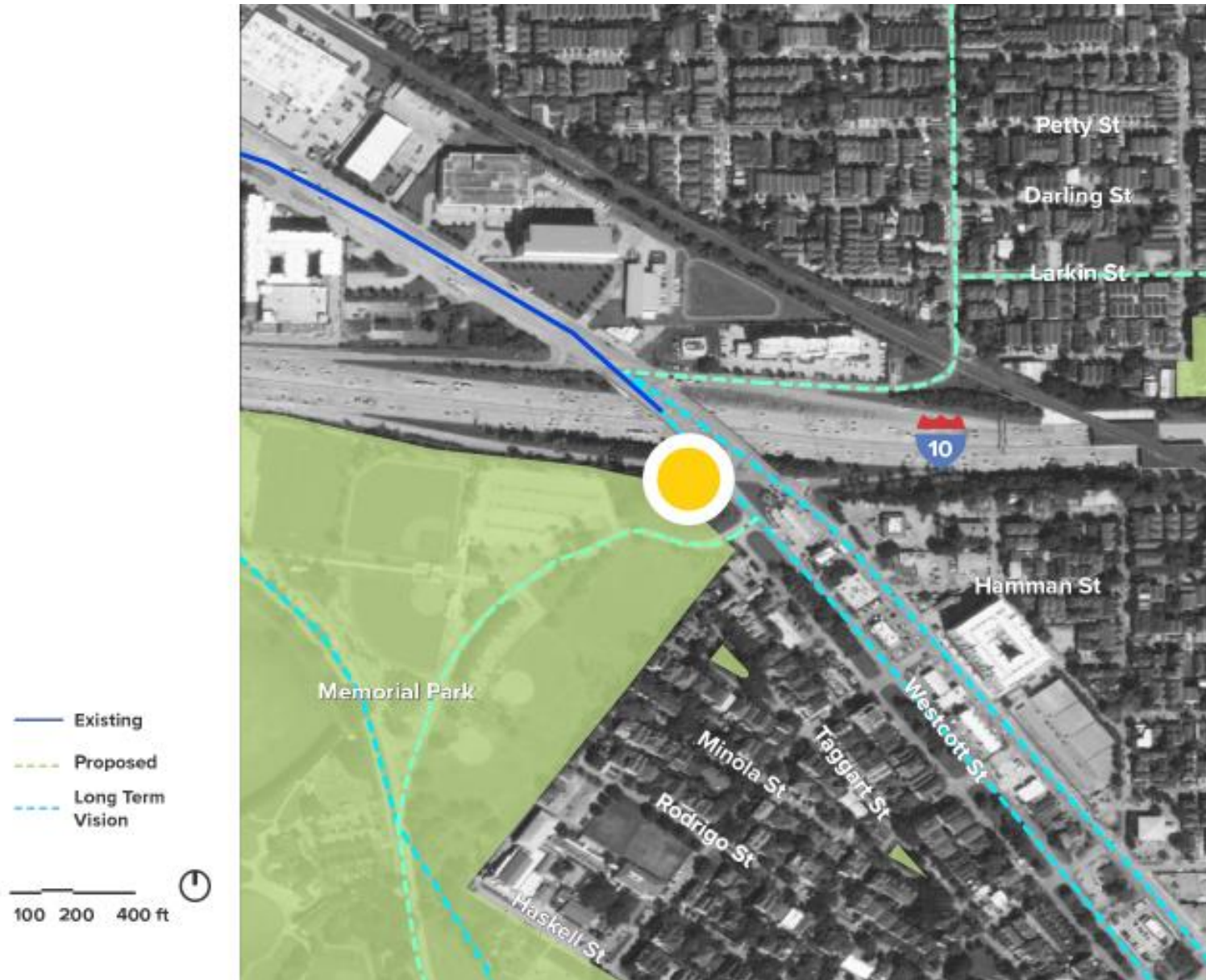
Memorial Park: Existing Land Use



Memorial Park: Sidewalks



Memorial Park: Parks and Trails



Memorial Park: Bus Routes



Memorial Park: Poll


- Locate the "Poll Pop-up" on the right-hand side of your screen.
- Select your answer.
- Be sure to scroll down to view all questions.

1. Please indicate the extent to which you agree that this station would provide access to nature and environmental features. (Single Choice) *

- ☐ 1. Strongly Agree
- ☐ 2. Agree
- ☐ 3. Neutral
- ☐ 4. Disagree
- ☐ 5. Strongly Disagree

0 of 1 answered

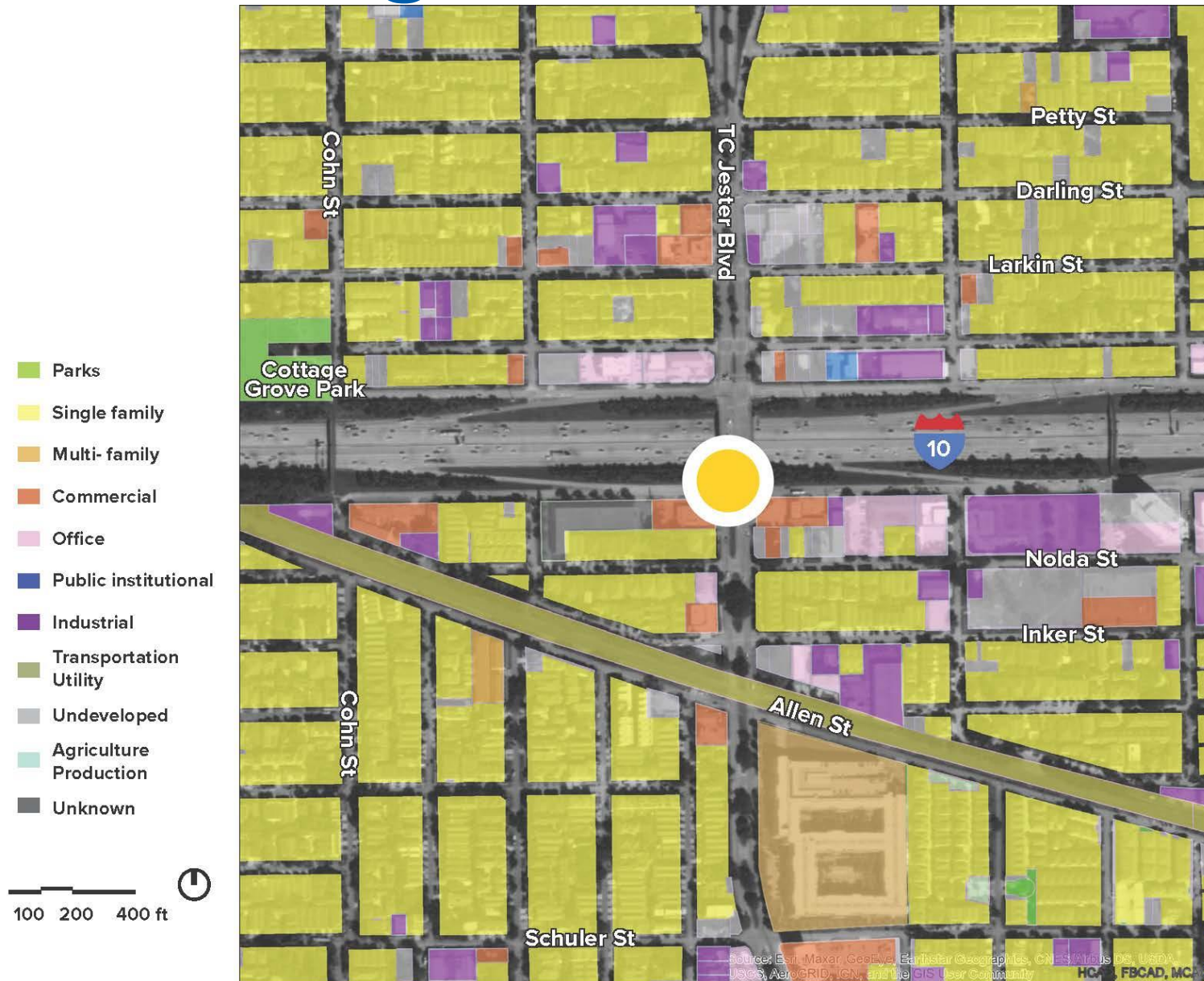
Submit

 Who can see your responses?

Potential Station at TC Jester



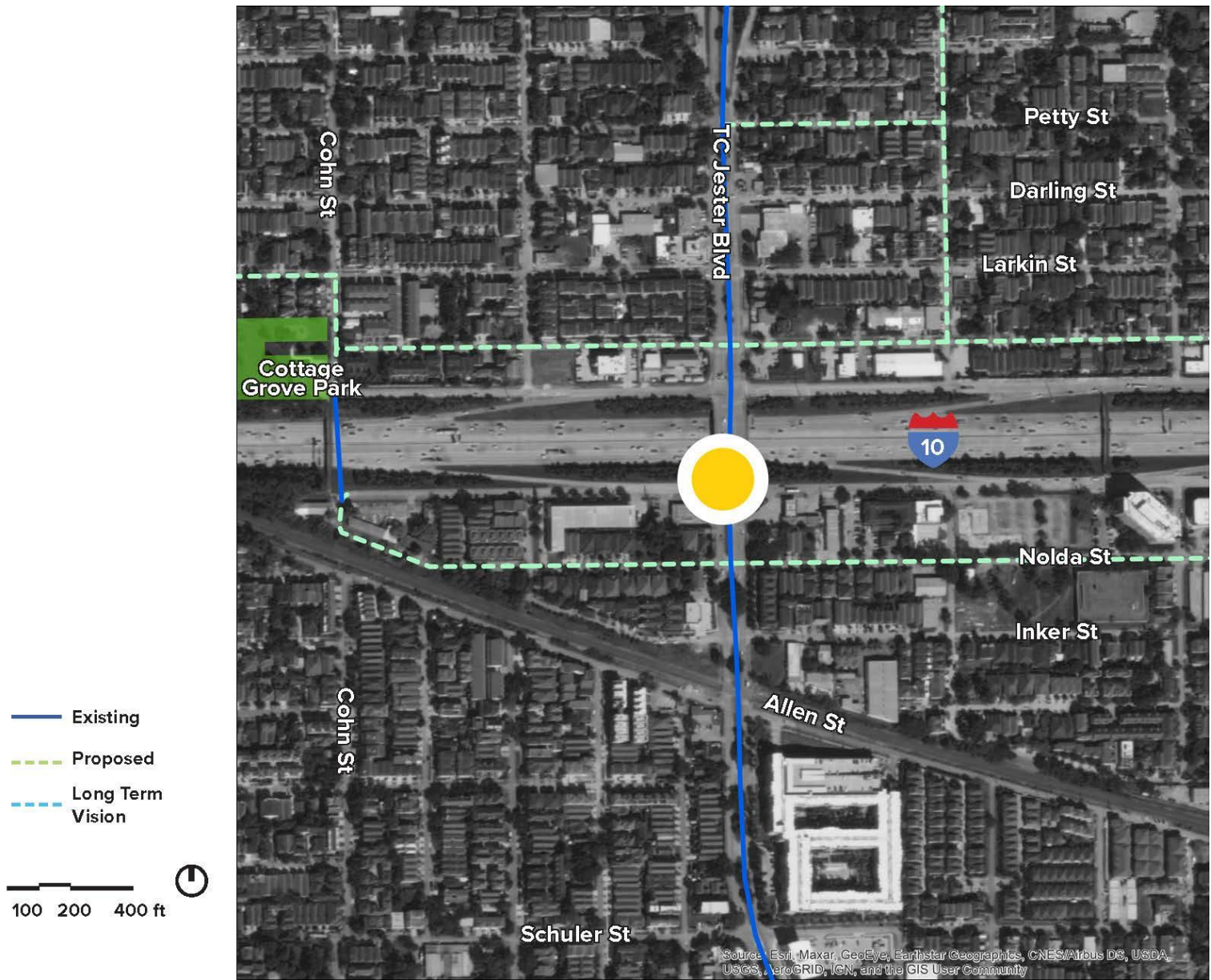
TC Jester: Existing Land Use



TC Jester: Sidewalks

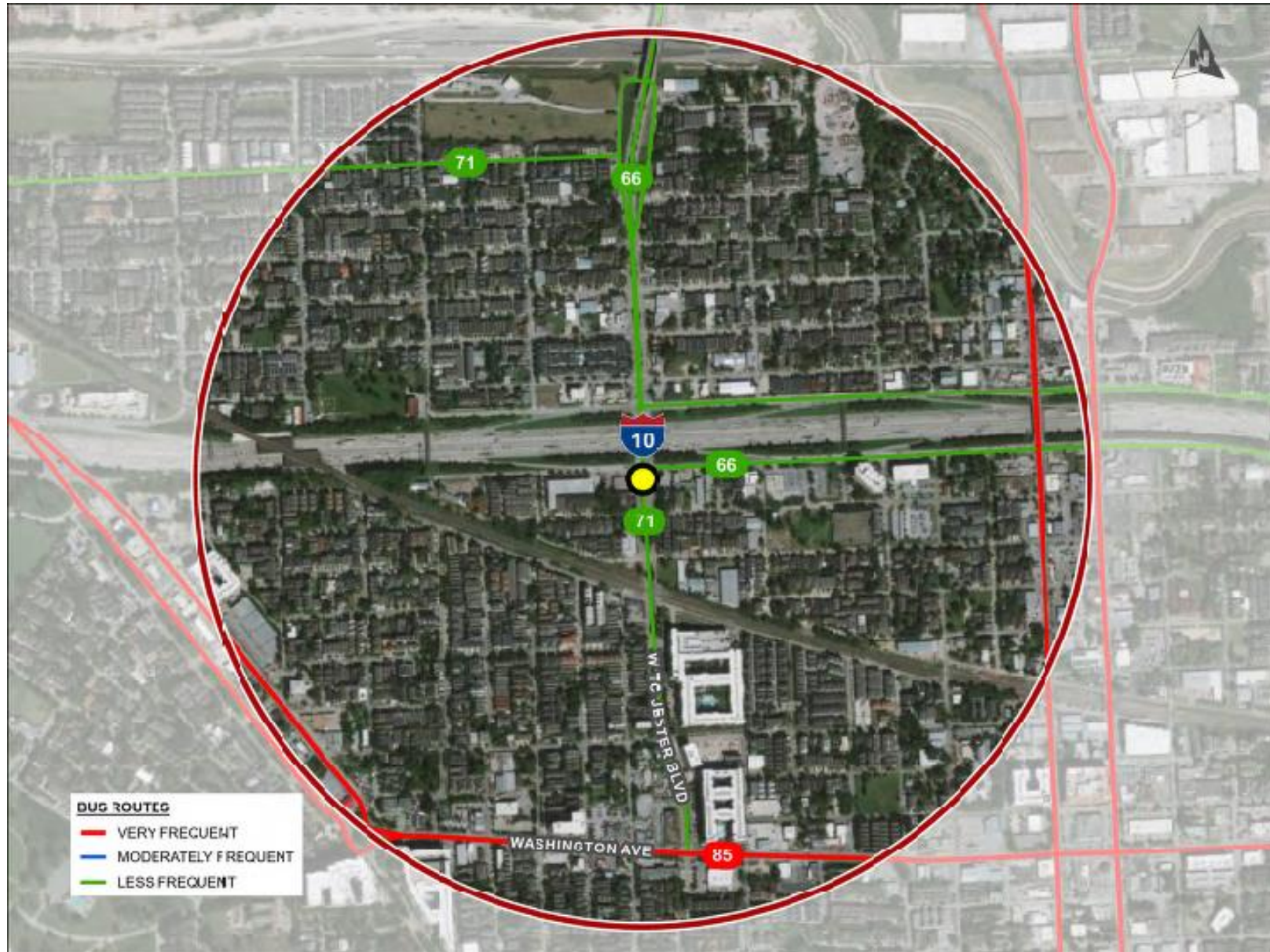


TC Jester: Parks and Trails



Source: Esri, Maxar, GeoEye, Earthstar Geographics, CNES/Airbus DS, USDA, USGS, AeroGRID, IGN, and the GIS User Community

TC Jester: Bus Routes



TC Jester: Poll


- Locate the "Poll Pop-up" on the right-hand side of your screen.
- Select your answer.
- Be sure to scroll down to view all questions.

1. Please indicate the extent to which you agree that this station would provide access to nature and environmental features. (Single Choice) *

- ☐ 1. Strongly Agree
- ☐ 2. Agree
- ☐ 3. Neutral
- ☐ 4. Disagree
- ☐ 5. Strongly Disagree

0 of 1 answered

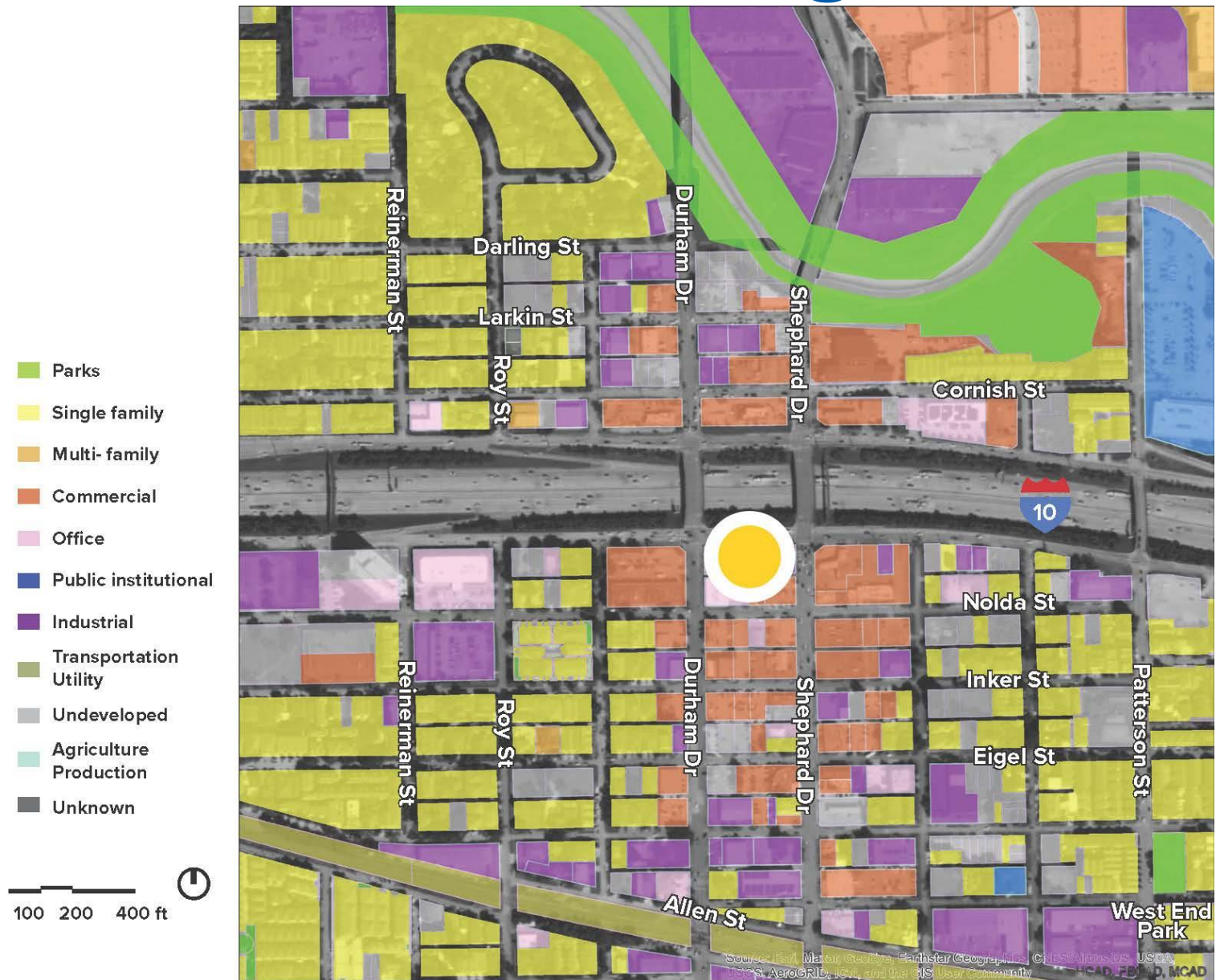
Submit

 Who can see your responses?

Potential Station at Shepherd/Durham



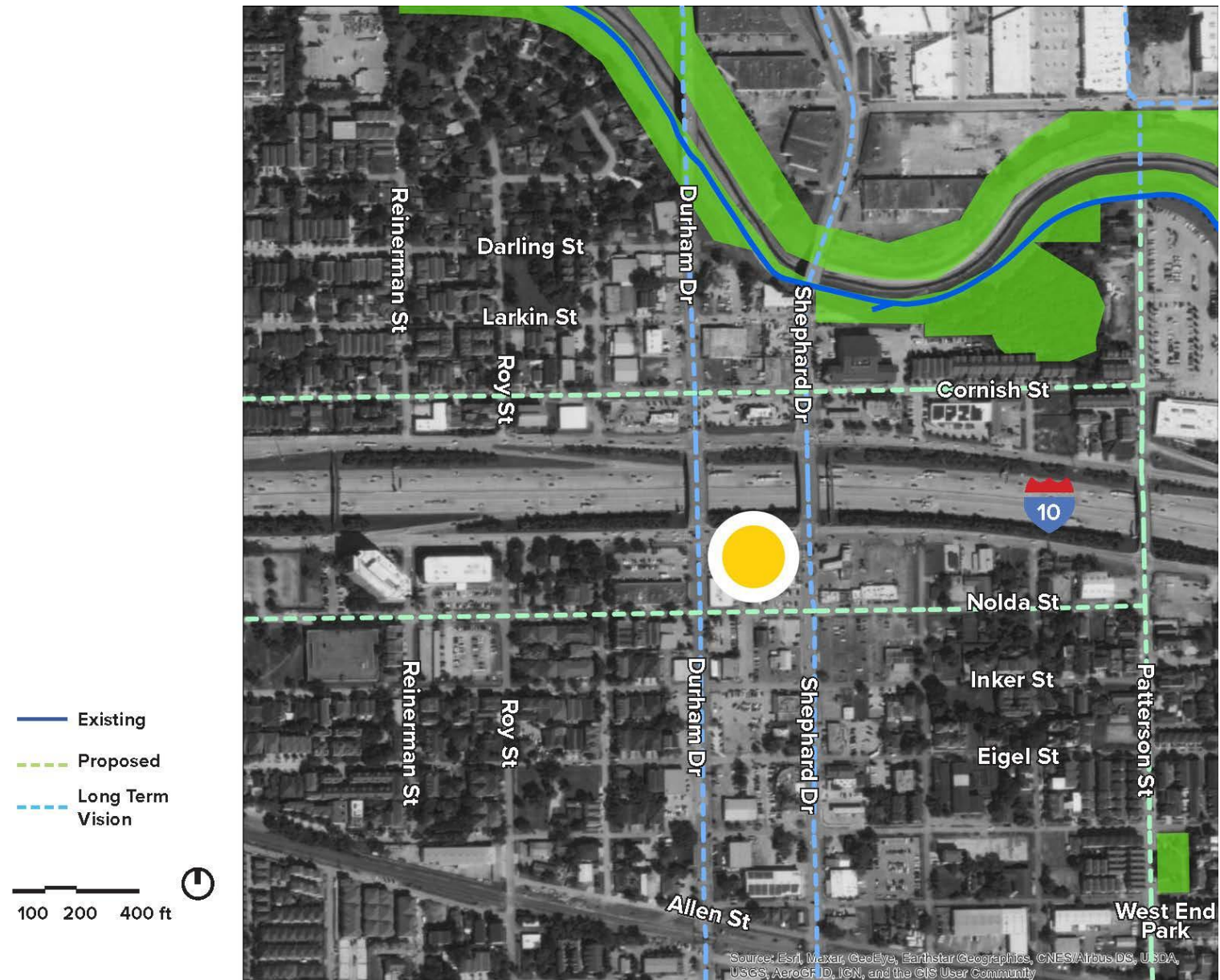
Shepherd/Durham: Existing Land Use



Shepherd/Durham: Sidewalks



Shepherd/Durham: Parks and Trails



Shepherd/Durham: Bus Routes



Shepherd/Durham: Poll


- Locate the "Poll Pop-up" on the right-hand side of your screen.
- Select your answer.
- Be sure to scroll down to view all questions.

1. Please indicate the extent to which you agree that this station would provide access to nature and environmental features. (Single Choice) *

- ☐ 1. Strongly Agree
- ☐ 2. Agree
- ☐ 3. Neutral
- ☐ 4. Disagree
- ☐ 5. Strongly Disagree

0 of 1 answered

Submit

 Who can see your responses?

Potential Station at Yale/Heights



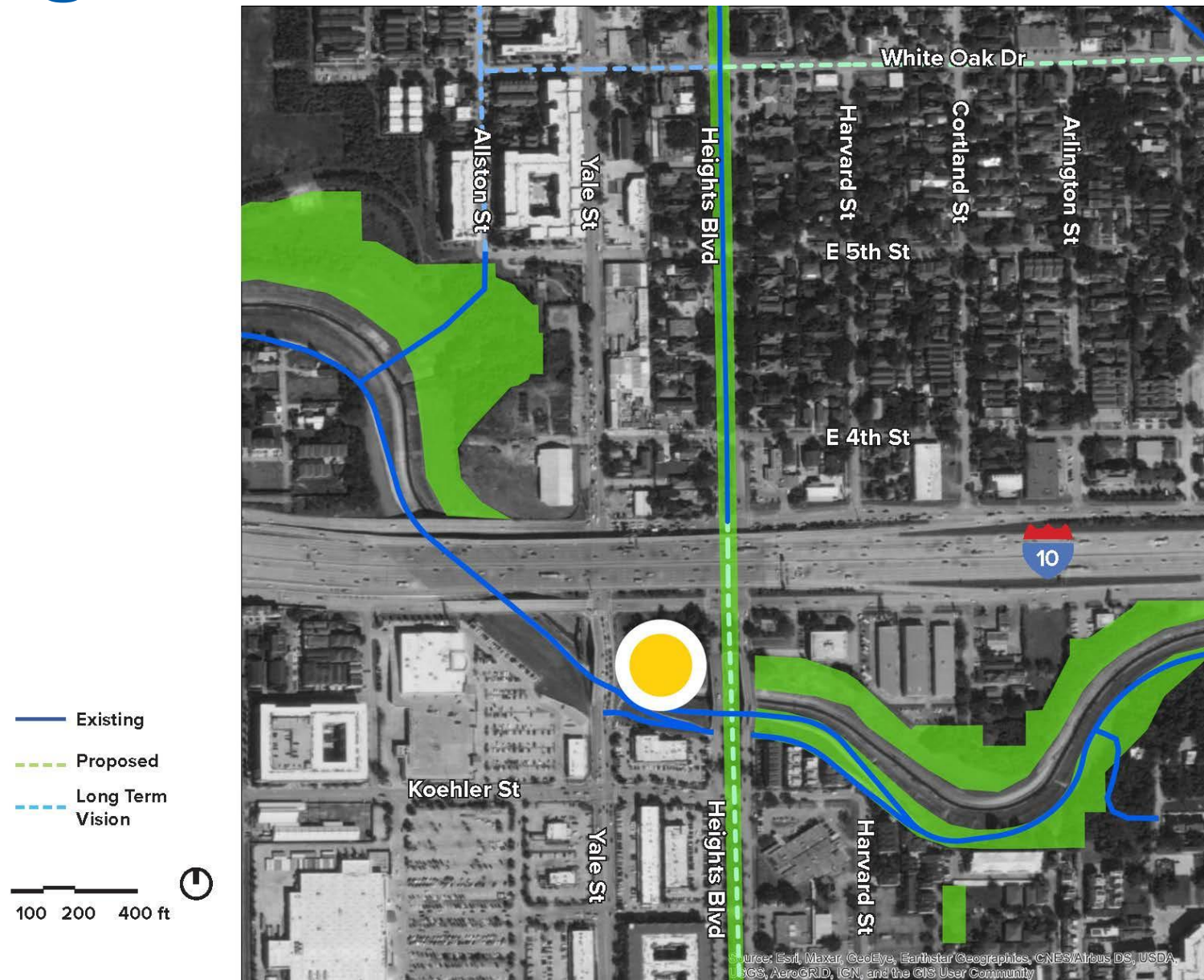
Yale/Heights: Existing Land Use



Yale/Heights: Sidewalks



Yale/Heights: Parks and Trails



Yale/Heights: Bus Routes



Yale/Heights: Poll


- Locate the "Poll Pop-up" on the right-hand side of your screen.
- Select your answer.
- Be sure to scroll down to view all questions.

1. Please indicate the extent to which you agree that this station would provide access to nature and environmental features. (Single Choice) *

- ☐ 1. Strongly Agree
- ☐ 2. Agree
- ☐ 3. Neutral
- ☐ 4. Disagree
- ☐ 5. Strongly Disagree

0 of 1 answered

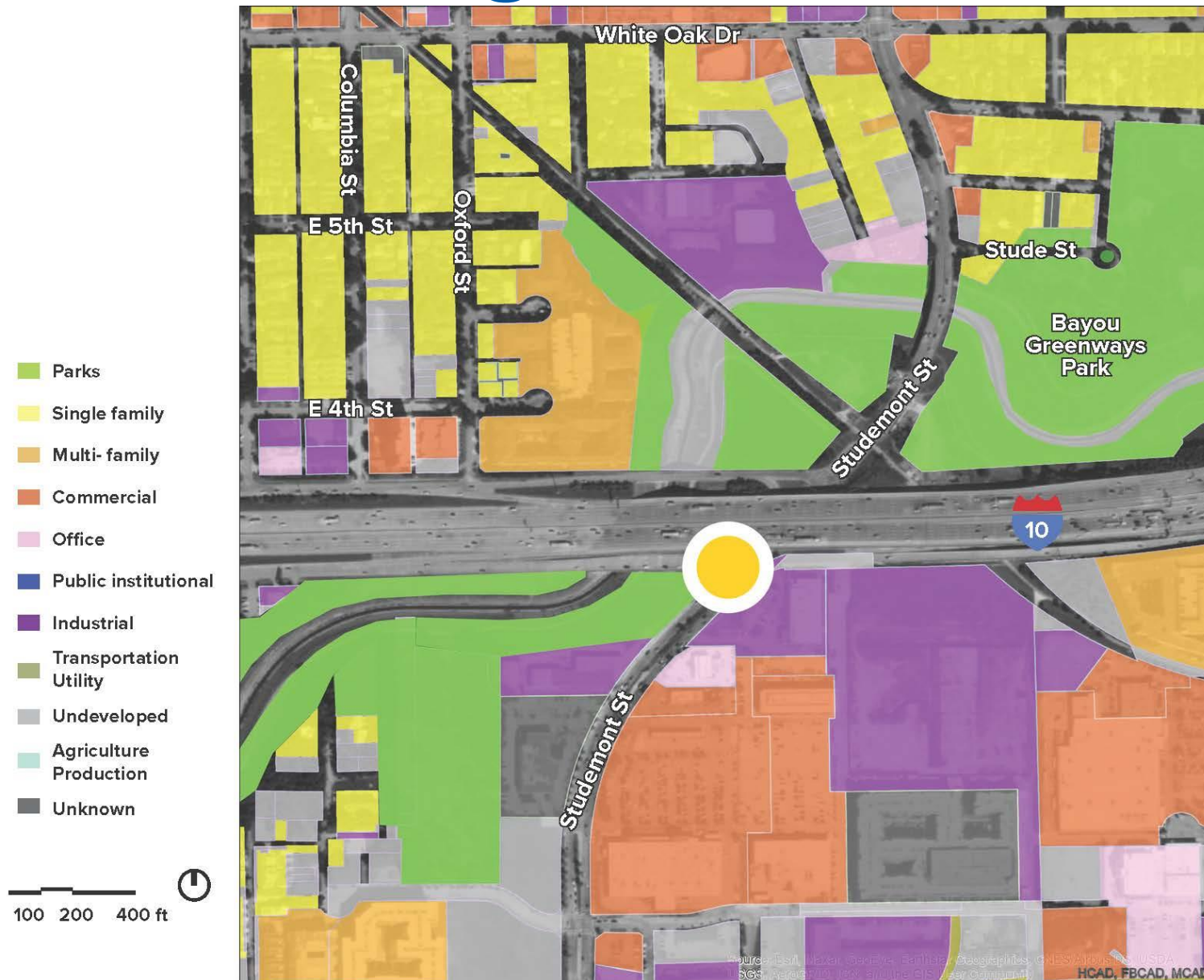
Submit

 Who can see your responses?

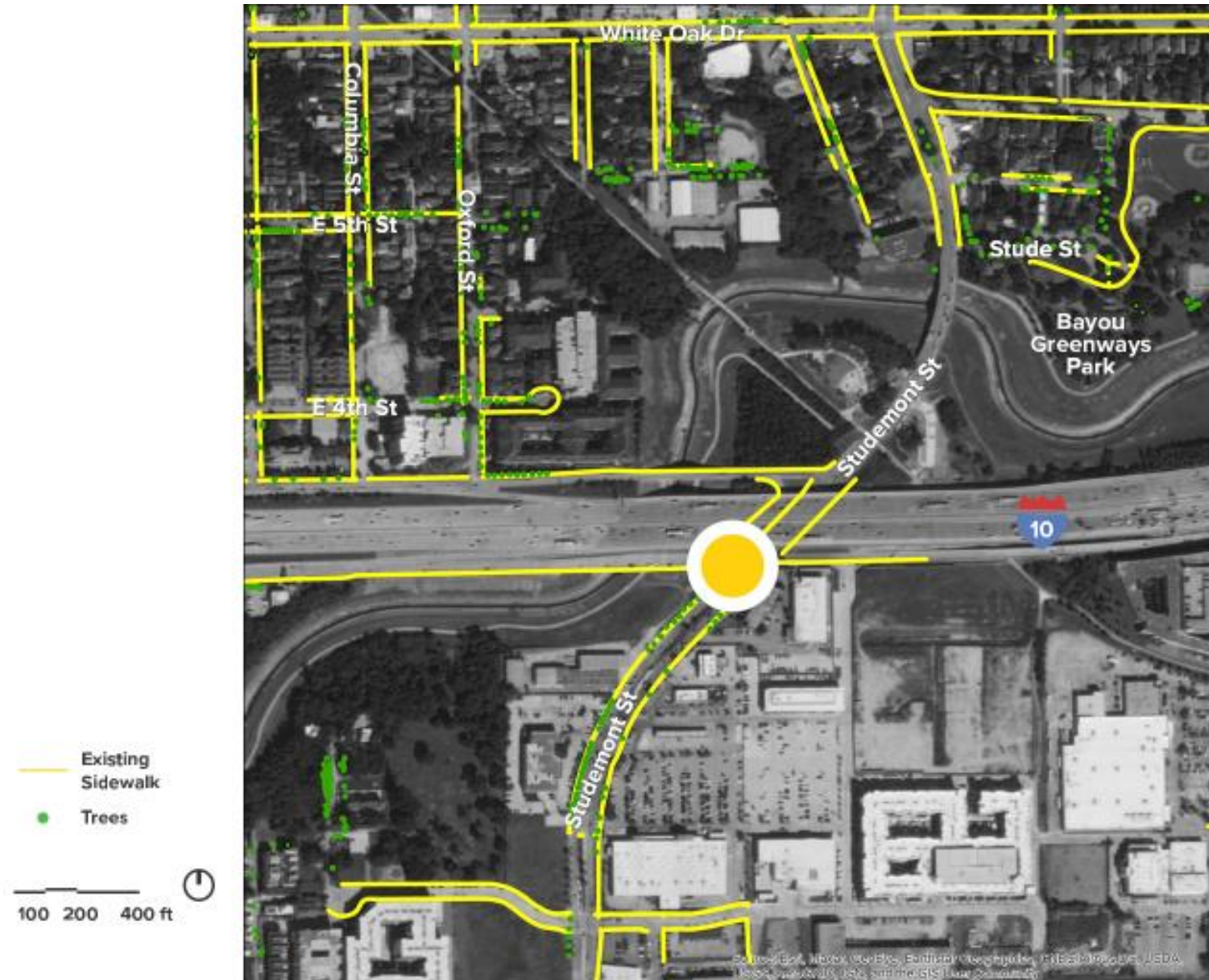
Potential Station at Studemont



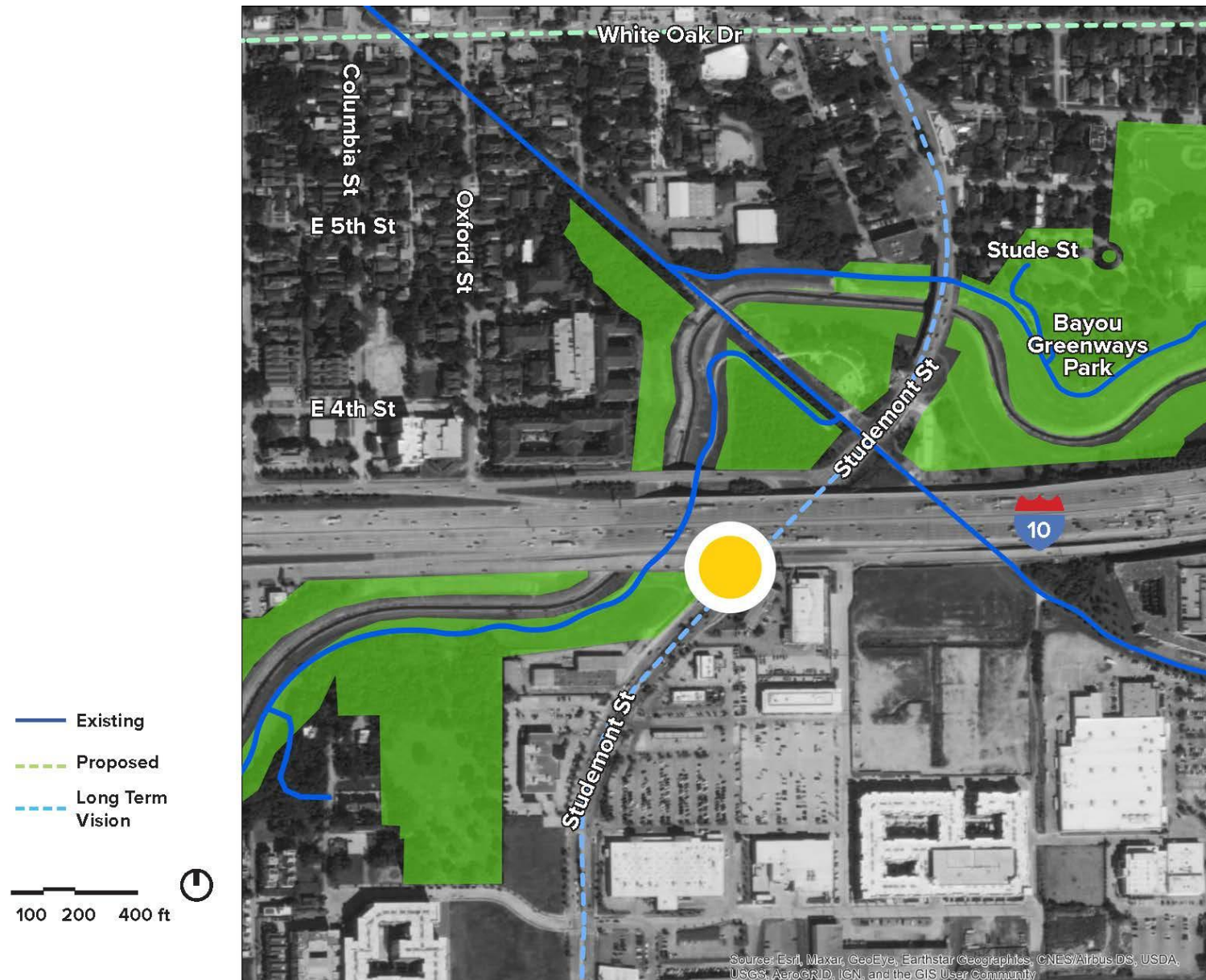
Studemont: Existing Land Use



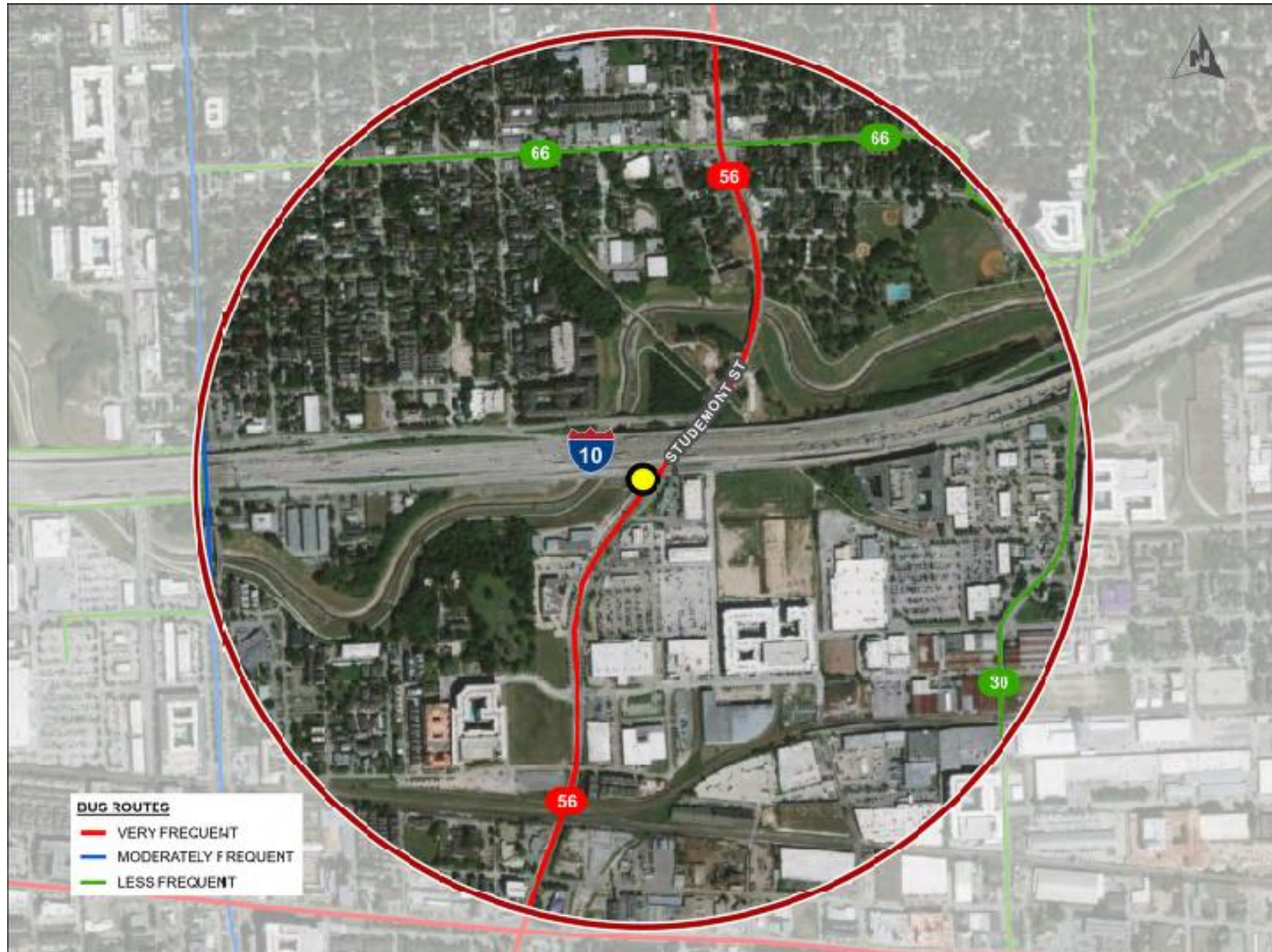
Studemont: Sidewalks



Studemont: Parks and Trails



Studemont: Bus Routes



Studemont: Poll


- Locate the "Poll Pop-up" on the right-hand side of your screen.
- Select your answer.
- Be sure to scroll down to view all questions.

1. Please indicate the extent to which you agree that this station would provide access to nature and environmental features. (Single Choice) *

- ☐ 1. Strongly Agree
- ☐ 2. Agree
- ☐ 3. Neutral
- ☐ 4. Disagree
- ☐ 5. Strongly Disagree

0 of 1 answered

Submit

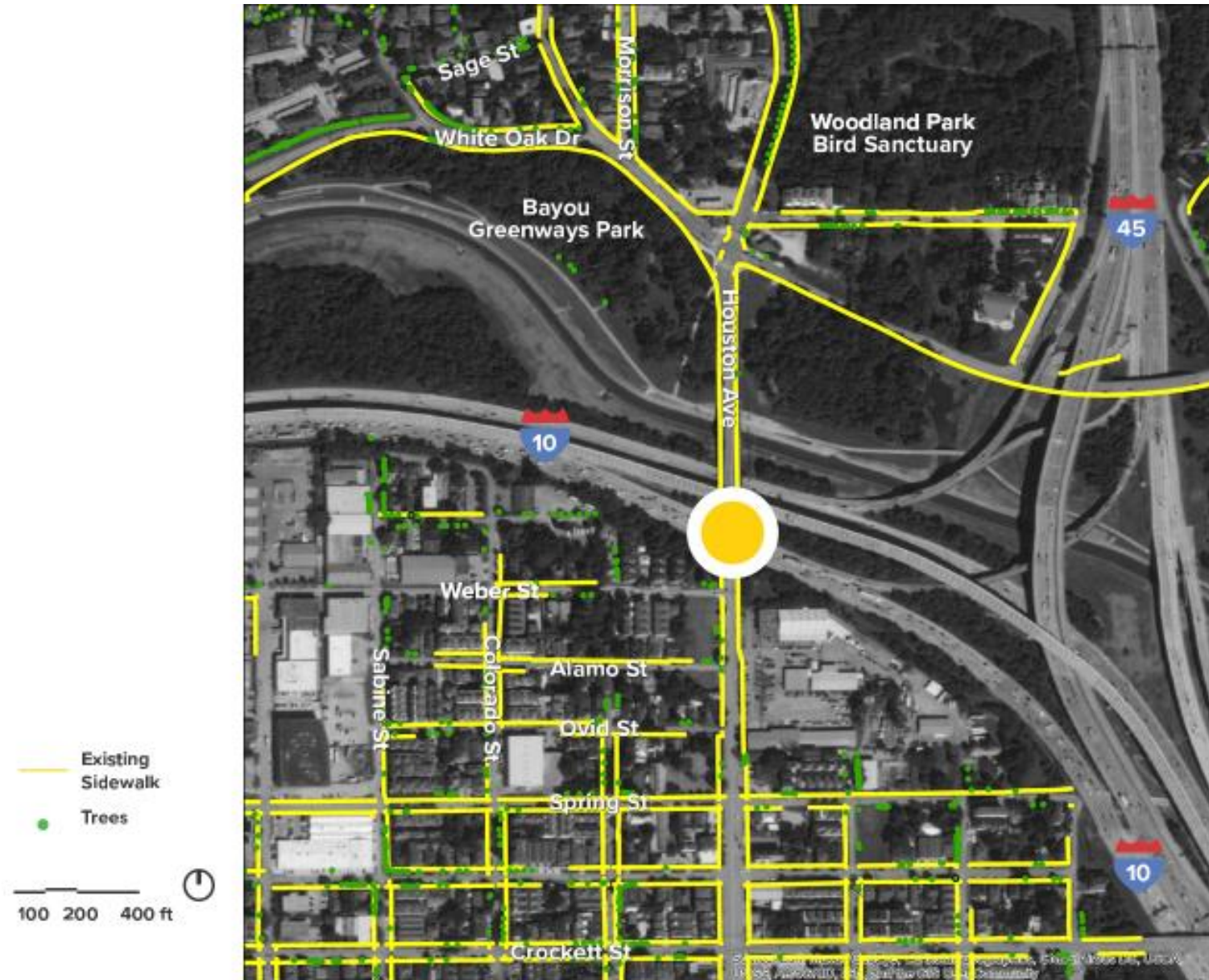
 Who can see your responses?

Potential Station at Houston Avenue

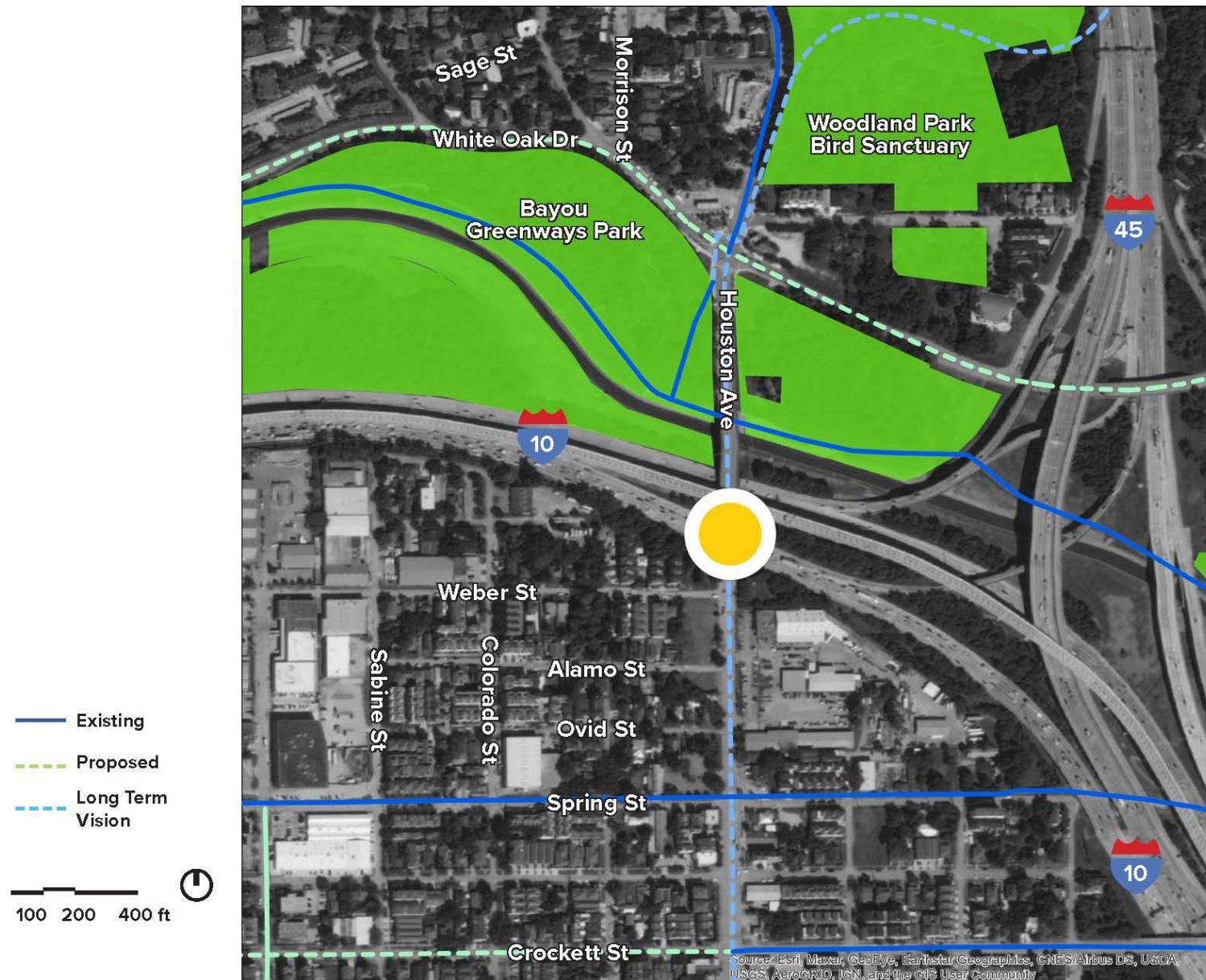




Houston Avenue: Sidewalks



Houston Avenue: Parks and Trails



Houston Avenue: Bus Routes



Houston Avenue: Poll


- Locate the "Poll Pop-up" on the right-hand side of your screen.
- Select your answer.
- Be sure to scroll down to view all questions.

1. Please indicate the extent to which you agree that this station would provide access to nature and environmental features. (Single Choice) *

- ☐ 1. Strongly Agree
- ☐ 2. Agree
- ☐ 3. Neutral
- ☐ 4. Disagree
- ☐ 5. Strongly Disagree

0 of 1 answered

Submit

 Who can see your responses?



BREAKOUT ROOMS



CLOSING REMARKS